

The high grade aluminum components and powder coat paints mean that corrosion is never a worry

A durable single bolt mounting bracket doubles resistance to vibration fatigue

Aquabloc media sheds water, keeps engines waterproof, rustproof, dirtproof

300 watt heaters start you in the cold – thermostats are standard to meet the requirements of today's electronic engines

Polymer bowl withstands impact and temperature extremes

Self venting drain. A single twist makes draining clean, fast and easy

The First Name In Fuel Filtration Is Also The Most Improved

Every engine runs better with a system that cleans fuel, removes water, heats fuel and senses when it's time for service. The system is the Racor Turbine Series and it's the most complete, most efficient, most reliable high capacity engine protection you can install. A system that protects your investment in engines and fuel.

End caps are color-coded for easy identification and application – red for 30 micron primary filtration, blue for 10 micron primary or secondary, and brown for 2 micron secondary/final filtration.

With an Aquabloc II replacement element, you get a complete kit with all the seals you need

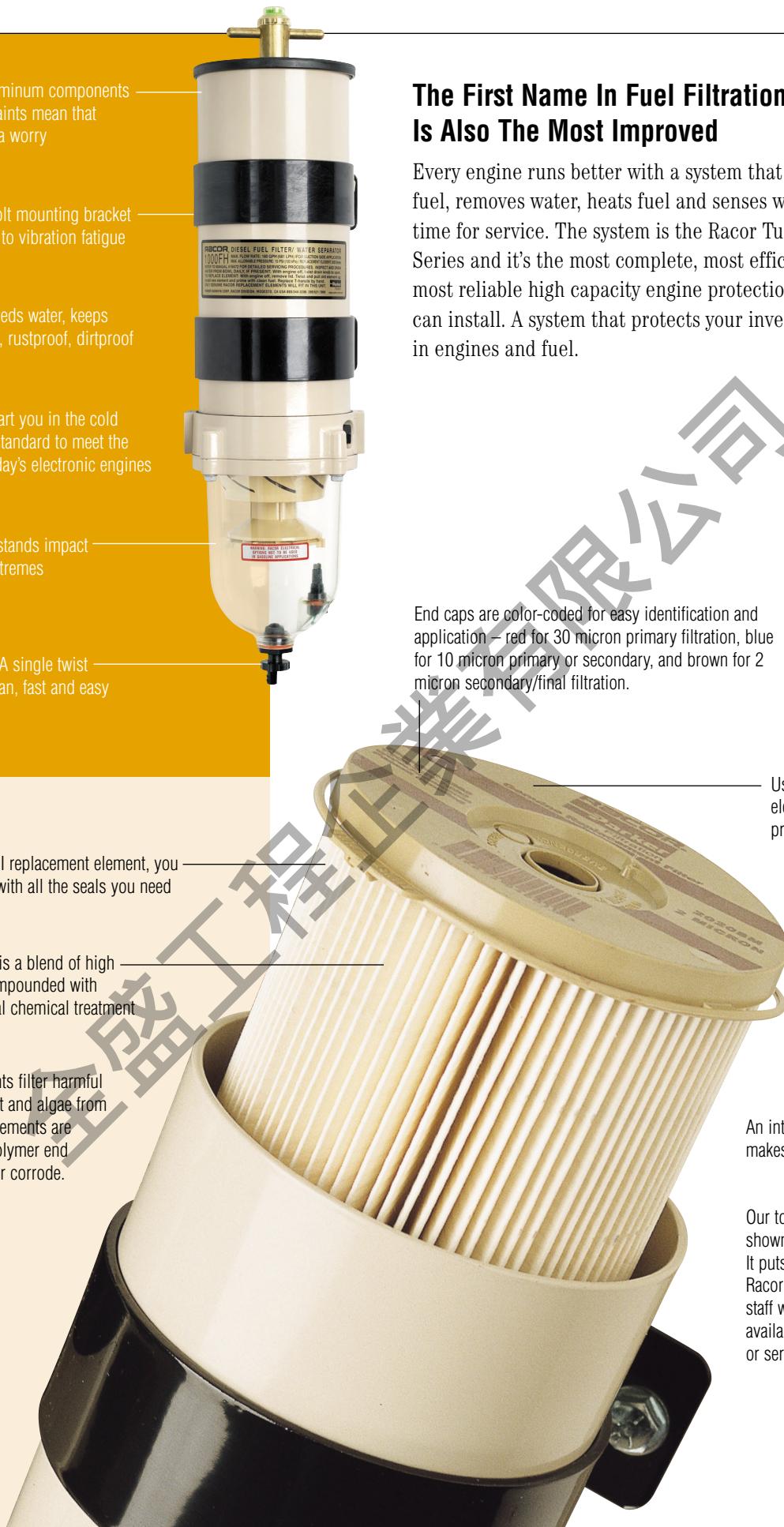
Aquabloc II media is a blend of high grade cellulose compounded with resins and a special chemical treatment

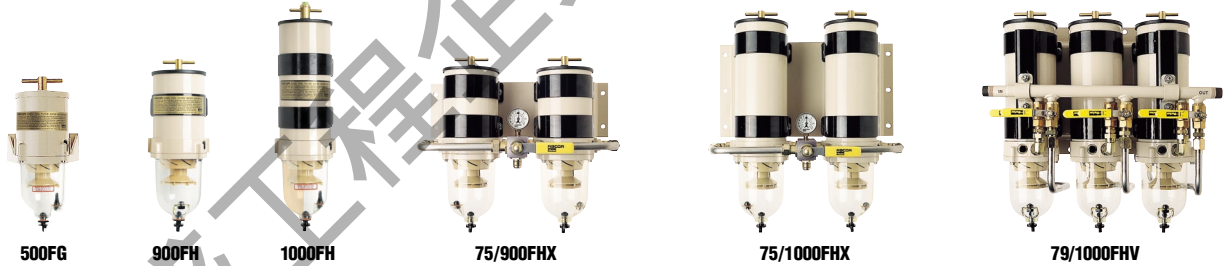
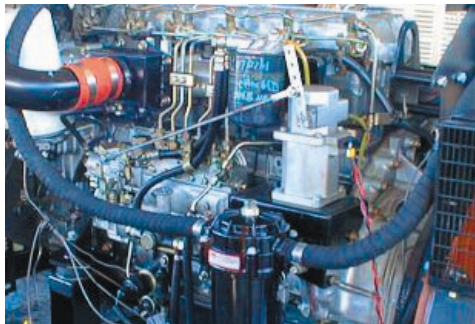
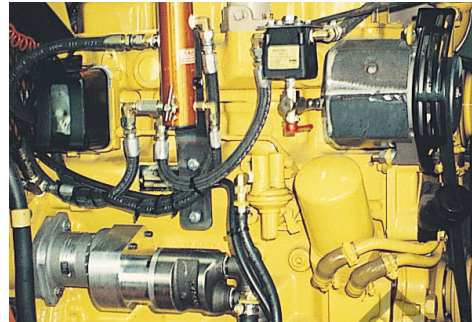
Aquabloc II elements filter harmful tiny particles of dirt and algae from fuel. Aquabloc II elements are rustproof – with polymer end caps that won't ever corrode.

Use original Racor filter elements to ensure premium performance

An integral bail handle makes changeouts easy

Our toll-free number is shown on the end cap. It puts you in touch with Racor's technical service staff who can answer any availability, application, or service question.





Model	500FG	900FH	1000FH	75/500FGX	75/900FHX	73/1000FH	75/1000FHX	77/1000FH	79/1000FHV
Maximum Flow Rate	60 gph 227 lph	90 gph 341 lph	180 gph 681 lph	120 gph 454 lph	180 gph 681 lph	360 gph 1363 lph	180/360 gph 681/1363 lph	540 gph 2044 lph	360/540 gph 1363/2044 lph
Height	11.5" / 292 mm	17" / 432 mm	22" / 559 mm	11.5" / 292 mm	17" / 432 mm	22" / 559 mm	22" / 559 mm	22" / 559 mm	22" / 559 mm
Width	5.8" / 147 mm	6" / 152 mm	6" / 152 mm	14.5" / 368 mm	18.75" / 476 mm	16.5" / 419 mm	18.75" / 476 mm	21.5" / 546 mm	21.5" / 546 mm
Depth	4.8" / 122 mm	7" / 178 mm	7" / 178 mm	9.5" / 241 mm	11" / 279 mm	12" / 305 mm	11" / 279 mm	12" / 305 mm	12" / 305 mm
Weight	4 lbs / 1.7 kgs	6 lbs / 2.7 kgs	10 lbs / 4.5 kgs	17 lbs / 7.7 kgs	23 lbs / 10.4 kgs	26 lbs / 11.8 kgs	30 lbs / 13.6 kgs	39 lbs / 17.7 kgs	52 lbs / 23.6 kgs
Port Size Std. (Option)	3/4" -16 UNF 16 mm x 1.5	7/8" -14 UNF 22 mm x 1.5	7/8" -14 UNF 22 mm x 1.5	3/4" -16 UNF	7/8" -14 UNF ¹	3/4" NPT	7/8" -14 UNF ¹	1" -11 1/2 NPT	3/4" NPT
Clean Pressure Drop	0.25 psi 1.72 kPa	0.34 psi 2.4 kPa	0.49 psi 3.4 kPa	0.70 psi 4.83 kPa	1.7 psi 11.7 kPa	1.7 psi 11.7 kPa	3.7 psi 25.5 kPa	1.7 psi 11.7 kPa	2.5 psi 17.2 kPa
Maximum Operating Pres.	15 psi 103 kPa	15 psi 103 kPa	15 psi 103 kPa	15 psi 103 kPa	15 psi 103 kPa	15 psi 103 kPa	15 psi 103 kPa	15 psi 103 kPa	15 psi 103 kPa
Element #	2010	2040	2020	2010	2040	2020	2020	2020	2020
Element Removal Clearance	4" / 102 mm	5" / 127 mm	10" / 254 mm	4" / 102 mm	5" / 127 mm	10" / 254 mm	10" / 254 mm	10" / 254 mm	10" / 254 mm

Notes: (1) Male "JIC" 37" fittings.
 (2) Flow rates shown for one/both filters on-line.
 (3) Flow rates shown for two/all filters on-line.
 For accurate fuel flow rates consult your engine manual, engine manufacturer's agent or Racor distributor.

Manifold Units:
 • 75/500, 75/900 and 75/1000 double manifolds with shutoff valve.
 • 73/1000 double manifold without shutoff valves.
 • 79/1000 triple manifold with shutoff valves.
 • 77/1000 triple manifold without shutoff valves.