

ENGINE HEATERS TANK STYLE

HOTSTART tank style engine heaters heat engine coolant to allow for easy engine start-up regardless of ambient temperature. These heaters are designed to heat engines from 6L to 25L displacement. Thermosiphon circulation of the coolant delivers heat throughout the entire engine. The heaters are available with static and adjustable thermostats to accommodate specific heating needs and to reduce energy consumption.

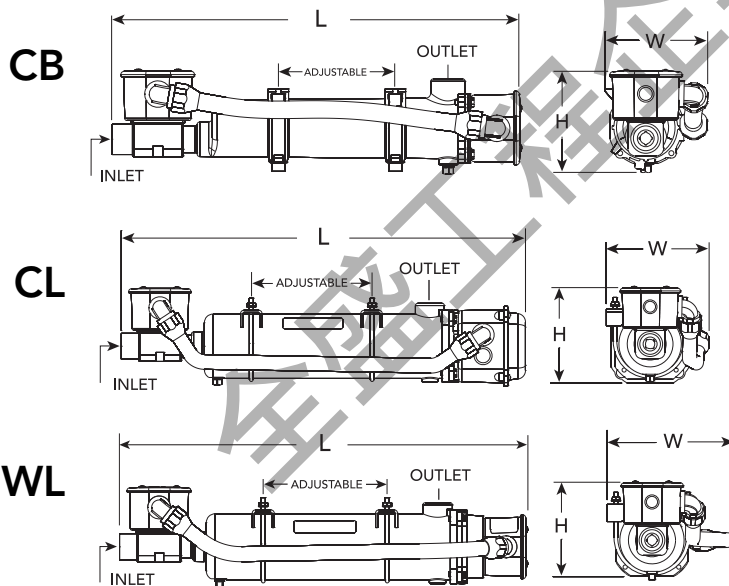


APPLICATION

HOTSTART tank style engine heaters were developed to preheat diesel and gas engines for stationary land power, heavy duty mobile equipment, marine and offshore equipment.

SPECIFICATIONS

- Heating Fluid: Engine coolant (50% glycol/50% water)
- Power: 1.5, 2, 2.5, 3, 4 and 5 kW
- Rated Voltage: 120V – 575V
- Phase: 1 and 3
- Tank Material: Aluminum
- Enclosure: IP44
- Fluid Capacity: CL/WL - 0.5gl (2.0L)
CB - 0.3gl (1.2L)
- Max Pressure: 125PSI (8.61 bar)
- Thermostat: 100° - 120°F (38° - 49°C)
- Inlet 1" NPT Male, Outlet 1" NPT Female



Dimensions & Weight			
Model	CB	CL	WL
kW Range	1.5-2.5kW	3-5kW	1.5-5kW
Phase	1	1	3
Height	5.2" 132mm	5.8" 147mm	5.8" 147mm
Length	20.1" 510mm	23.5" 597mm	23" 585mm
Width	5.1" 129mm	6.2" 158mm	7.5" 190mm
Weight	6.7 lbs 3 kg	10.3 lbs 4.6 kg	12.1 lbs 5.4 kg

FEATURES

- UL-C/US listed
- CE compliant
- Various temperature settings available, including adjustable thermostat 90° - 130°F (32° - 54°C)
- 1 phase heaters 1.5-5kW include hi-limit safety thermostat 205°F (95°C)

